



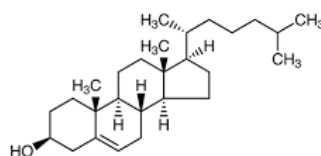
## Certificate of Analysis.

### Cholesterol.

Product code:	<b>BS13560.</b>
Description:	<b>Cholesterol.</b>
Chemical Name:	<b>Cholesteryl Alcohol.</b>
Pack:	<b>1 gm.</b>
CAS No.:	<b>57-88-5.</b>
Mol. Weight:	<b>386.66 g/mol.</b>
Mol. Formula:	<b>C<sub>27</sub>H<sub>46</sub>O.</b>
MDL Number:	<b>MFCD00003646.</b>
Melting Point:	<b>149 °C.</b>
Boiling Point:	<b>360 °C.</b>
Density:	<b>1.067 g/ml.</b>
Solubility:	<b>Soluble in chloroform.</b>
Storage:	<b>Store at ambient temperature.</b>
LOT NO.:	<b>Sample.</b>
Manufacture Date:	<b>Lot specific.</b>
Expiry Date:	<b>5 years.</b>

Test	Specification	Measured Values
Appearance:	White to Almost white powder to crystal.	<b>Lot specific.</b>
Identification by NMR:	Confirms to the structure.	<b>Lot specific.</b>
Identification by MASS:	Confirms to the structure.	<b>Lot specific.</b>
Identification by IR:	Confirms to the structure	<b>Lot specific.</b>
Assay:	≥97%.	<b>Lot specific.</b>

Please Note: - This material is only for laboratory purpose and not for human consumption. This is a computer generated COA, no stamp or signature is required.



**Dr. K. Deepti.**  
**Technical Head.**

